

REVISION BY

DO NOT SCALE THIS DRAWING

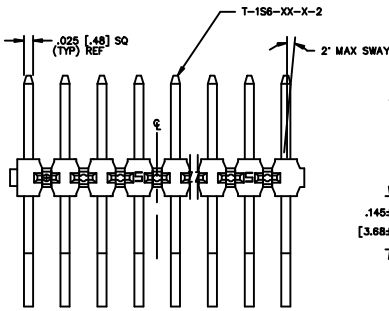
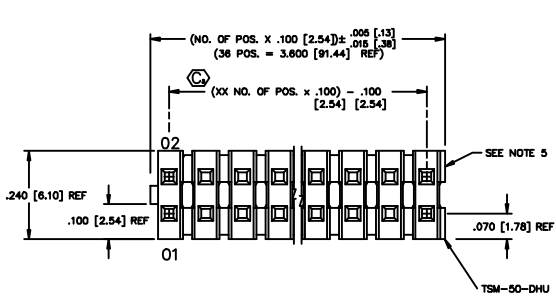
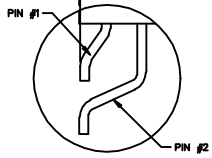
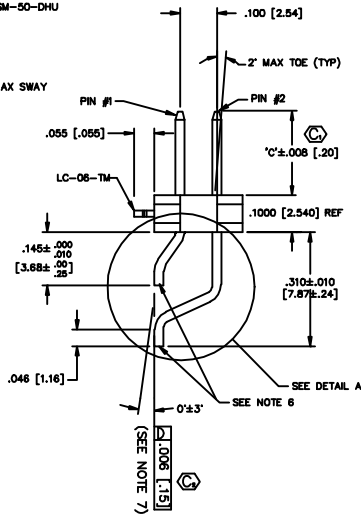


FIG. 1
-LC: LOCKING CLIP OPTION
CLIPS N/A WITH -A OPTION.

(SEE FIG 7, SHEET 3)



DETAIL A



SEE DETAIL A
SEE NOTE 6
SEE NOTE 7

ONE PLACE DECIMALS ± .1 [3]	THREE PLACE DECIMALS ± .005 [0.13]	ANGLES ± 2°	TITLE: TERMINAL SRTP DOUBLE SURFACE MOUNT	DWG NO: TSM-1XX-XX-XXX-XX-XX-XXX-XX
TWO PLACE DECIMALS ± .01 [0.3]	FOUR PLACE DECIMALS ± .0020 [0.051]			SHEET 1 OF 3

TSM-1XX-XX-XXX-XX-XX-XXX-XX

NO. OF POSITIONS
-02 THRU -36
LEAD STYLE
(SEE TABLE 1)

PLATING SPEC.

- T: TIN - SPECIFY -T IN TERMINAL SUFFIX -X
- S: SELECTIVE - SPECIFY -S IN TERMINAL SUFFIX -X
- L: SELECTIVE - SPECIFY -L IN TERMINAL SUFFIX -X
- F: FLASH SELECTIVE - SPECIFY -F IN TERMINAL SUFFIX -X
- H: HEAVY GOLD - SPECIFY -H IN TERMINAL SUFFIX -X
- P: GOLD FLASHED PALLADIUM NICKEL - SPECIFY -P IN TERMINAL SUFFIX -X
- TL: TIN/LEAD - SPECIFY -TL IN TERMINAL SUFFIX -X
- STL: SELECTIVE TIN/LEAD - SPECIFY -STL IN TERMINAL SUFFIX -X
- SM: SELECTIVE HEAVY GOLD, MATTE TIN TAIL
- LM: SELECTIVE LIGHT GOLD, MATTE TIN TAIL
- FM: FLASH SELECTIVE GOLD, MATTE TIN TAIL
- TM: MATTE TIN

ROW OPTION

- DH: DOUBLE HORIZONTAL (USE TSM-50-DHU)
- MT: MIXED TECHNOLOGY (SEE FIG. 4 & TABLE 1) (NOT AVAILABLE WITH -LC, -SL, -TR OR -A OPTIONS)

NOTES:

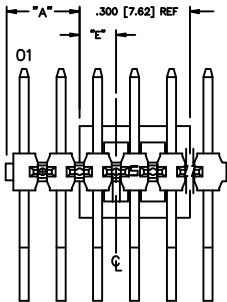
1. $\text{\textcircled{C}}$ REPRESENTS A CRITICAL DIMENSION.
2. DELETED
3. DELETED
4. DELETED
5. .005 [0.13] MAX CUT FLASH.
6. .002 [0.05] MAX BURR. MUST BE AWAY FROM SMT BOARD SIDE.
7. DELETED
8. CUT TO POSITION BODIES TO BE MULTI-CUT OR ROTO-CUT ONLY. NEVER AIR CUT.
9. TUBE POSITIONS 5-36, BULK PACKAGE OPTIONS 2-4.
10. 3 LBS. MIN PUSHOUT FORCE.
11. -04 LEAD STYLE DOES NOT MATE WITH SSM-DH.
12. ORIENTATION OF PART IN TAPE AND REEL TO BE CONTROLLED BY POCKET DESIGN.

ROW OPTION	LEAD STYLE	BOTTOM ROW PIN #1	TOP ROW PIN #2	C°
-DH	-01	T-158-09-X-2	T-158-20-X-2	.230 [5.84]
-DH	-02	T-158-09-X-2	T-158-20-X-2	.320 [8.13]
-DH	-03	T-158-09-X-2	T-158-20-X-2	.420 [10.67]
-DH	-04 (SEE NOTE 11)	T-158-09-X-2	T-158-20-X-2	.120 [3.05]
-MT	-01	T-158-08-X-2	T-158-20-X-2	.230 [5.84]
-MT	-02	T-158-15-X-2	T-158-20-X-2	.320 [8.13]
-MT	-03	T-158-09-X-2	T-158-20-X-2	.420 [10.67]

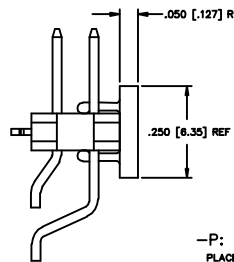
TABLE 2

No Of POS	S/S BOW
02 - 10	.0030 [0.080]
11 - 20	.0050 [0.127]
21 - 30	.0070 [0.178]
31 - 36	.0080 [0.203]

DIFFERENT AS SHOWN. OTHERWISE SAME AS FIG. 1.



FOR EVEN: "A" = $\frac{(\text{NO. OF POS. X } .100 [2.54]) - .300 [7.62]}{2} + .050 [1.27]$
 FOR ODD: "A" = $\frac{(\text{NO. OF POS. X } .100 [2.54]) - .300 [7.62]}{2}$



POS.	"E"
ODD	.150 [3.81]
EVEN	.100 [2.54]

FIG. 3

-P: PICK & PLACE PAD
PLACE PPP-08 ON $\text{\textcircled{C}}$ AS SHOWN

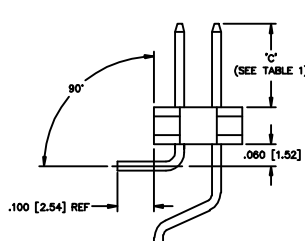
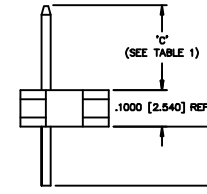


FIG. 4

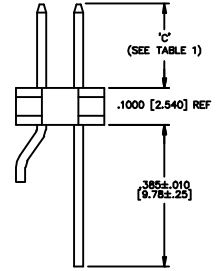
-MT: MIXED TECHNOLOGY
DIFFERENT AS SHOWN,
OTHERWISE SAME AS FIG. 1
(SEE NOTE 7)

IN-PROCESS 1



MATERIAL:
INSULATOR:
LIQUID CRYSTAL POLYMER
COLOR: BLACK
TERMINALS:
PHOSPHOR BRONZE

IN-PROCESS 2



EXSPROD ASSEMBLY 100 TSM01
samtec
 520 PARK EAST BLVD. NEW ALBANY, INDIANA 47150
 PHONE (812) 944-8733 P.O. BOX 1147
 CODE 55322

MADE IN: BRATONER 7-27-95 TSM-1XX-XX-XXX-XX-XX-XXX-XX SHEET 1 OF 3

PROPRIETARY NOTE
 THIS DRAWING AND THE INFORMATION CONTAINED HEREIN ARE THE PROPERTY OF SAMTEC CORPORATION. NO PART OF THIS DRAWING OR THE INFORMATION CONTAINED HEREIN IS TO BE REPRODUCED, COPIED, OR TRANSMITTED IN ANY FORM OR BY ANY MEANS, ELECTRONIC OR MECHANICAL, INCLUDING PHOTOCOPYING, RECORDING, OR BY ANY INFORMATION STORAGE AND RETRIEVAL SYSTEM, WITHOUT THE WRITTEN PERMISSION OF SAMTEC CORP.